

TAMPA, FLORIDA

AL-417 (FAA)

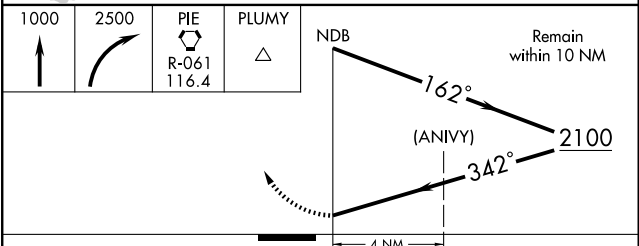
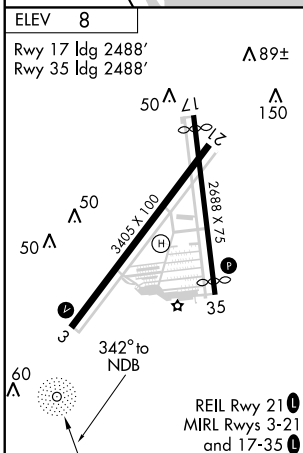
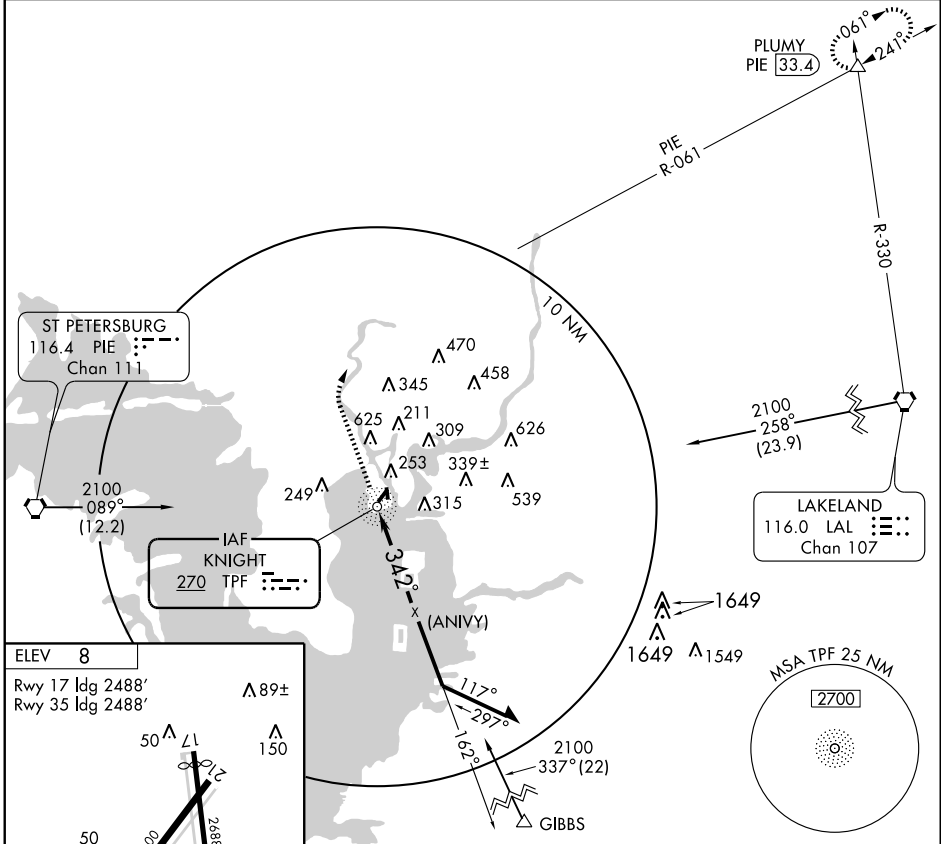
NDB or GPS-A TAMPA/PETER O KNIGHT (TPF)

NDB TPF 270	APP CRS 342°	Rwy ldg TDZE Apt Elev	N/A N/A 8
-----------------------	------------------------	--------------------------	--------------------------------------

▼
▲ NA
ASR Use Tampa altimeter setting.

MISSED APPROACH: Climb to 1000 then climbing right turn to 2500 via PIE R-061 to PLUMY Int and hold.

TAMPA APP CON 119.9 290.3	CLNC DEL 119.8	UNICOM 122.8 (CTAF) 0
-------------------------------------	--------------------------	---------------------------------



CATEGORY	A	B	C	D
CIRCLING	920-1¼	912 (1000-1¼)	1000-3 992 (1000-3)	NA

TAMPA, FLORIDA
Orig-A 05020

27°55'N-82°27'W

TAMPA/PETER O KNIGHT (TPF) NDB or GPS-A

SE-3, 04 AUG 2005 to 01 SEP 2005

SE-3, 04 AUG 2005 to 01 SEP 2005